

We Know the Way

CHIEF ANCESTOR 3:



Musical score for Chief Ancestor 3. The score is in 4/4 time and consists of a vocal line and a piano accompaniment. The vocal line begins with a rest followed by the lyrics "We read the wind and the sky". The piano accompaniment features a steady bass line and chords in the right hand, with a G major chord and a C major chord indicated above the staff.

We read the wind and the sky

CHIEF ANCESTOR 2:



Musical score for Chief Ancestor 2. The score is in 4/4 time and consists of a vocal line and a piano accompaniment. The vocal line begins with a rest followed by the lyrics "when the sun is high. We sail the length of the seas". The piano accompaniment features a steady bass line and chords in the right hand.

when the sun is high. We sail the length of the seas

CHIEF ANCESTOR 1:



Musical score for Chief Ancestor 1. The score is in 4/4 time and consists of a vocal line and a piano accompaniment. The vocal line begins with a rest followed by the lyrics "on the o-ccean breeze. At night we name ev-'ry star, we know where we are." The piano accompaniment features a steady bass line and chords in the right hand, with an F major chord and a G major chord indicated above the staff.

on the o-ccean breeze. At night we name ev-'ry star, we know where we are.

CHIEF ANCESTORS:

9

We know who we are, who we are...

Chord: C

ALL:

11

A-way, a-way! We set a course to find a brand new is-land ev-'ry-

Chords: F, C, G

Dynamic: *ff*

14

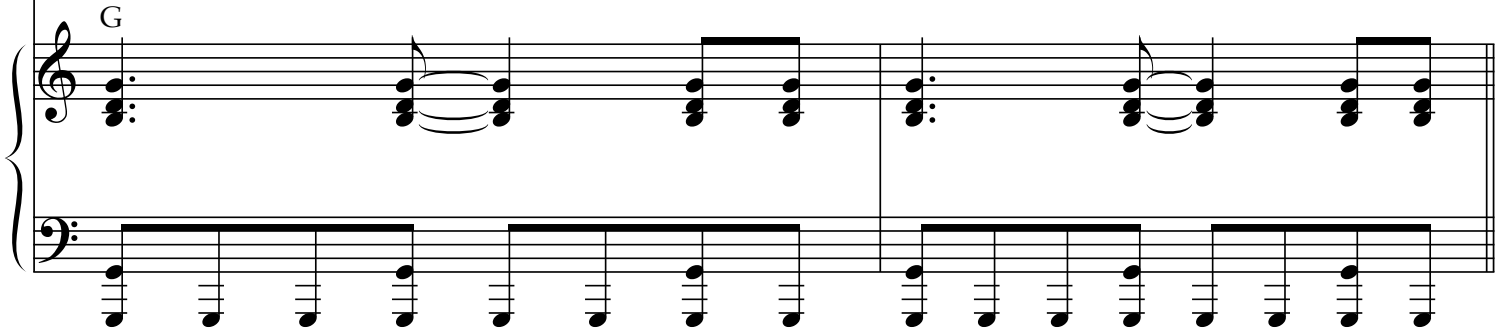
where we roam. A-way, a-way! We keep our is-land in our mind.

Chords: C, F, C

17



And when it's time to find home, we know the way!



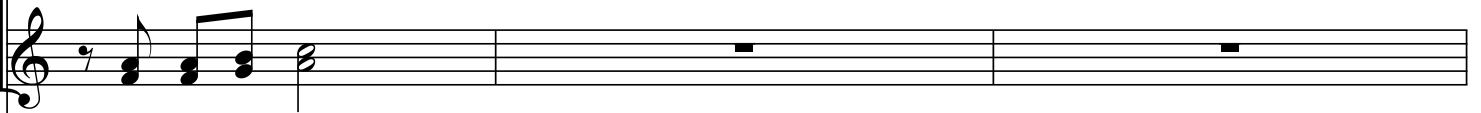
GROUP 1:

19

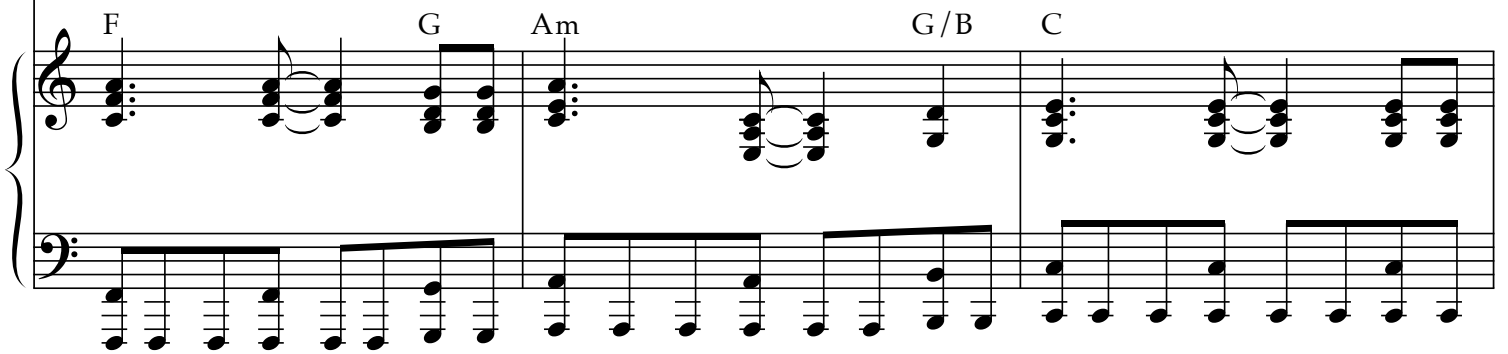


We are ex - plor - ers, read - ing ev - 'ry sign. We tell the sto - ries of our

GROUP 2:



A - way, a - way!



eld - ers in a nev - er - end - ing chain.

A - ue! A - ue!

G F G

ALL:

Te fen - u - a te mal - i - e, Na - e ko ha - ki - li - a

Am C G

We know the way!

C